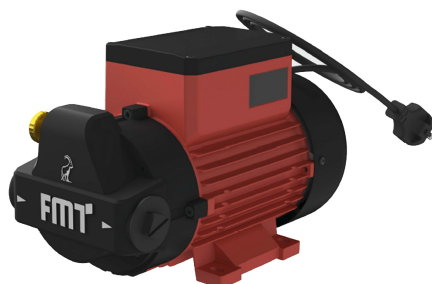


Vane oil pump 30 l/min

230 V-1~AC-50 Hz-1,2 kW



Item number: 23 301
EAN: 4048358233011
Discount group: D

Technical data

Connection suction side: G 1" female
 Connection discharge side: G 1" female

Hydraulic data

Pump design: vane pump
 Nominal operating point (bar): 1
 Maximum operating point (bar): 6
 Delivery rate under free discharge (l/min): 30
 Max. suction height (m): 2,5
 Direction of rotation: right
 Pumping media: oils up to SAE 80
 Operating temperature area (°C): +10 / +50



Motor data

Voltage (V): 230
 Frequency (Hz): 50
 Power consumption (A): 5,0
 Power (kW): 1,2
 Nominal speed (rpm): 1450
 Torque (Nm): 5,5
 Safety class: IP54
 Type of construction: IMB 3

Materials of parts in contact with liquid

Pump housing: EN AC 42100
 Rotor: sintered metal
 Vanes: POM
 Seal: FKM
 Raceway: GG 25



Dimensions LxWxH (mm): 300 x 160 x 185
 Weight (kg): 12,1

Specification

- Vane pump, with integral bypass
- On/Off switch

Special notes

- First class construction of electric machines and pumps
- Designed for a long service life
- Encapsulation of the electric motor, which, in case of extreme temperature fluctuations, largely prevents the formation of condensed water and of short-circuits resulting thereof
- Motor and switch case made of shock resistant, die-cast aluminium
- Continuous operation – a real endurance runner
- Small tolerances provide a high suction- and pressure performance



Packaging

Dimensions LxWxH (mm): 400 x 195 x 200
 Weight including package (kg): 12,6
 Packing unit: 1,0

